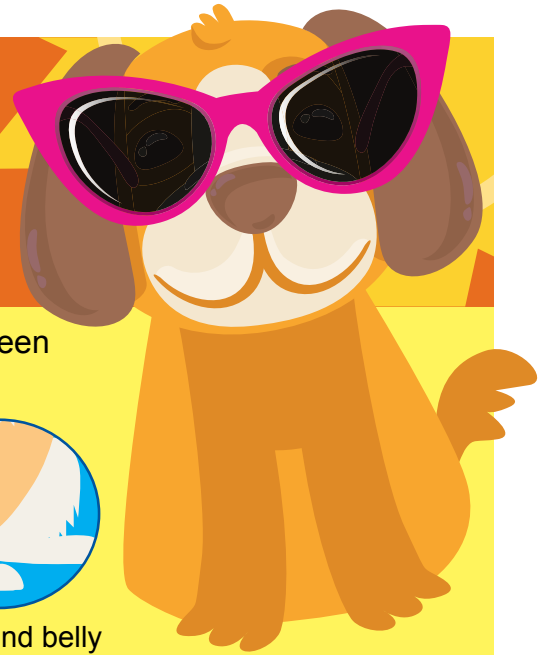


DON'T LET YOUR DOG FEEL THE BURN...



If a dog is out during peak sun exposure hours, reapply sunscreen to the sun-sensitive areas of the body throughout the day:



Nose



Around the lips



Tips of the ears



Groin and belly



Always immediately reapply sunscreen after swimming.

WHAT TYPE OF SUNSCREEN?

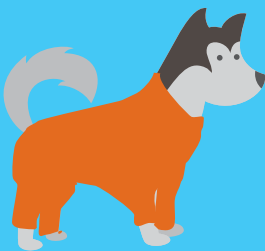
Sunscreen created specifically for canine use is the safest and most effective, but if you don't have pet sunscreen, look for a broad-spectrum sunscreen for babies and children with an SPF of 15 or higher—but read the label!



Sunscreen should not contain:

- Fragrance
- Zinc oxide
- Para-aminobenzoic acid (PABA)

OTHER PRECAUTIONS:



Bodysuits or shirts



Hats with ultraviolet protection



Dog goggles



The best protection is sun avoidance, keeping pets out of the sun, especially between the peak sun hours of 10 a.m. – 2 p.m.